

# DYNAMICAL METHODS AND MATHEMATICAL MODELLING

ETSII, Valladolid, Spain – September 18-22, 2007

## PLACES (see map in the back)

The Conference will take place in the following rooms:

- OPENING.  
Salón de Actos de la ETSII, 1<sup>st</sup> floor.
- PLENARY LECTURES and SESSIONS A1, A2, A3, A4, A5 and A6.  
Conference room A: room B-8, ground floor.
- SESSIONS B1, B2, B3, B4, B5 and B6.  
Conference room B: room B-5, ground floor.
- SESSIONS C3, C4 and C5.  
Conference room C: room B-6, ground floor.
- POSTERS EXHIBITION and POSTERS DISCUSSION.  
Conference room D: room B-7, ground floor.
- WORKING ROOMS: rooms 1.5 and 1.6, 1<sup>st</sup> floor.
- SECRETARIAT OF THE CONFERENCE.  
Seminary of the Departamento de Matemática Aplicada, 2<sup>nd</sup> floor.
- WELCOME, COFFEE BREAKS and VINO ESPAÑOL.  
Cafetería de la ETSII, basement of the ETSII.

### MAP

#### OPENING

B-8

B-5

B-6

B-7

1.5, 1.6

R

C

## INTERNET ACCESS

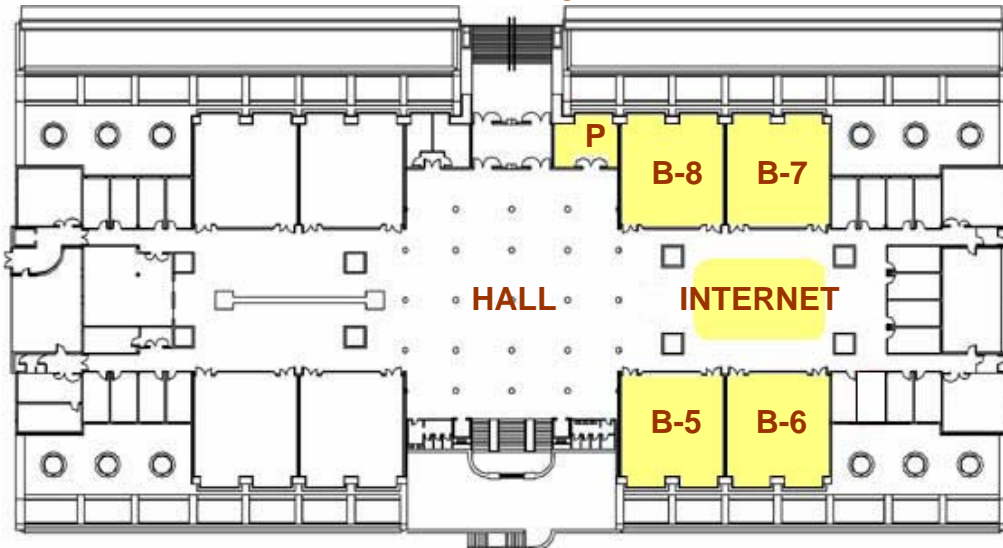
All participants in the Conference dm<sup>3</sup>07 may access the Internet and related services in three different ways:

1. By means of the computers in the Universia room (ground floor of the E.T.S.I.I. see **INTERNET** in the map). All of the computers in this room are available for the participants in the conference. The only requirement is to obtain an anonymous UVA card at the porter's office (see **P** in the map); there you will be required to leave a card or passport in order to guarantee the return of the UVA card.
2. Using the wireless network UVA-wifi. The connection to this network may be established in the regular way. Throughout the Conference, the following access identity will be available for all the participants:  
login: dm07  
password: modelling
3. Those having an identity granting their access to the European Education Roaming Network (also known as EDUROAM) may access this network from the E.T.S.I.I. or elsewhere within the University campus. In order to do so, the EDUROAM software must be set up so that the Configuration box remains unchecked and that the field Username is of the form name@domain.country.



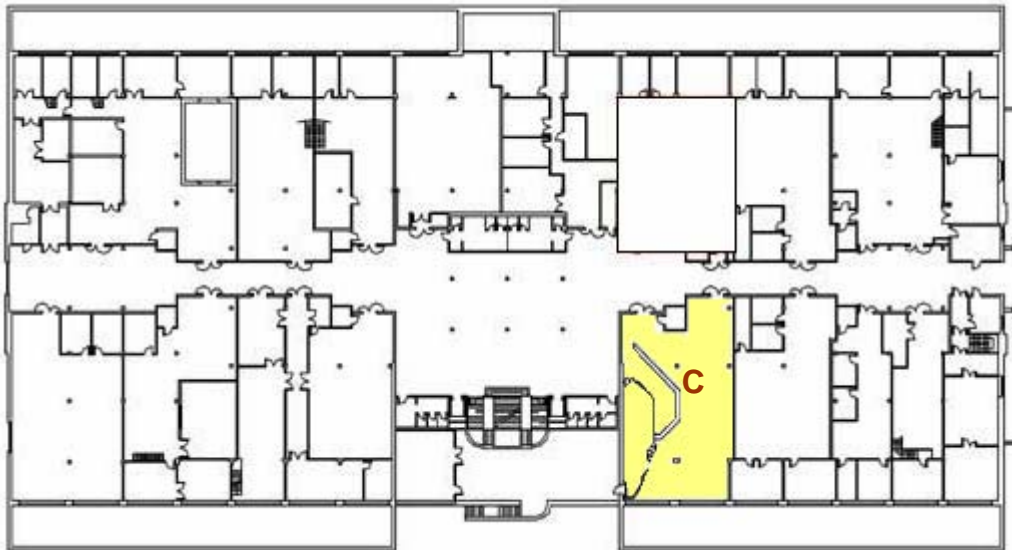
For further information, please ask the organizing committee.

ENTRANCE



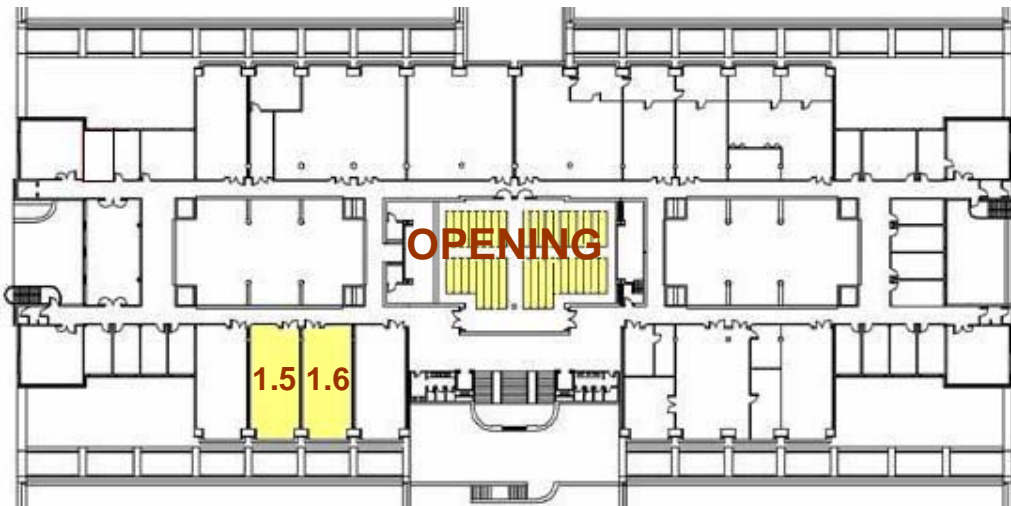
P= PORTER'S OFFICE

GROUND FLOOR

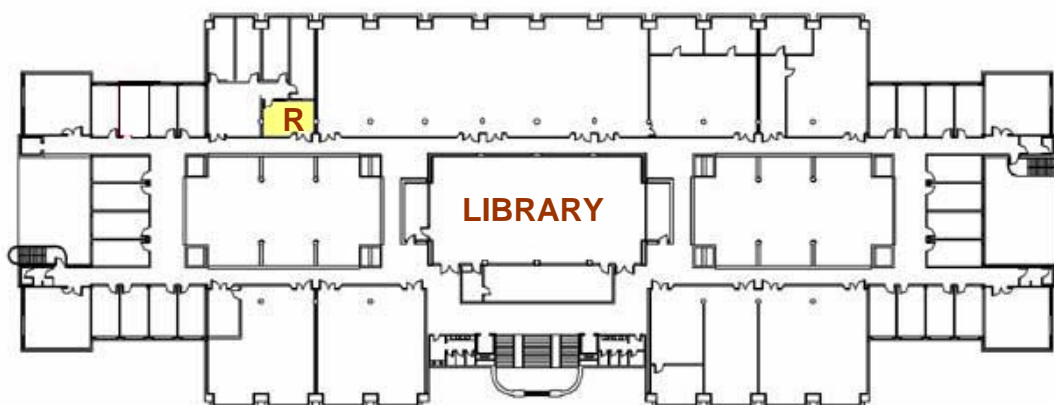


BASEMENT

C=CAFETERIA



FIRST FLOOR



R=REGISTRATION

SECOND FLOOR